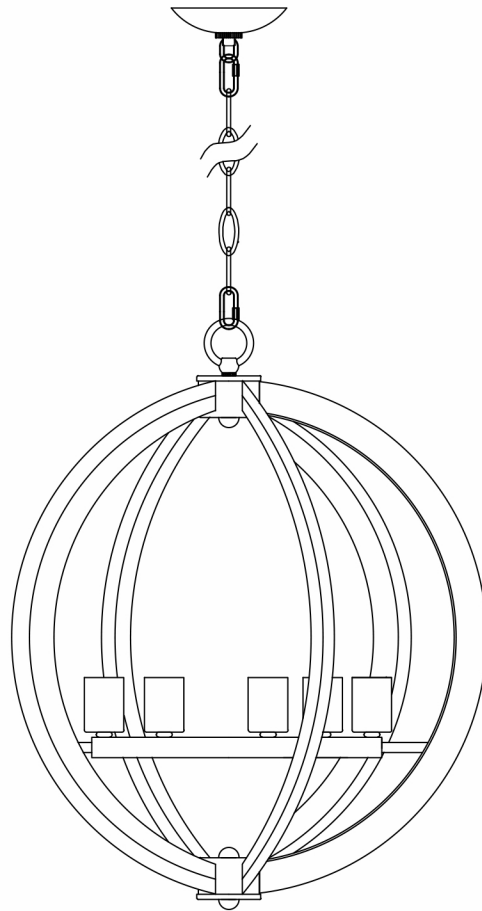


STUDIO•M

SM260917

Please consult your electrician for hanging fixture and wiring.

Please consult your electrician for hanging fixture and wiring.



Bulb(not included): 5 Edison-style bulbs recommended

STUDIO•M

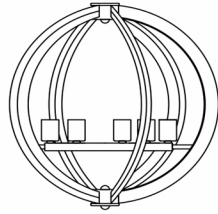
SM260917

Please consult your electrician for hanging fixture and wiring.

IMPORTANT: Turn off the power at the main fuse or circuit breaker box before starting installation



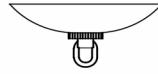
(A) Top Loop



(B) Body



(C) Chain

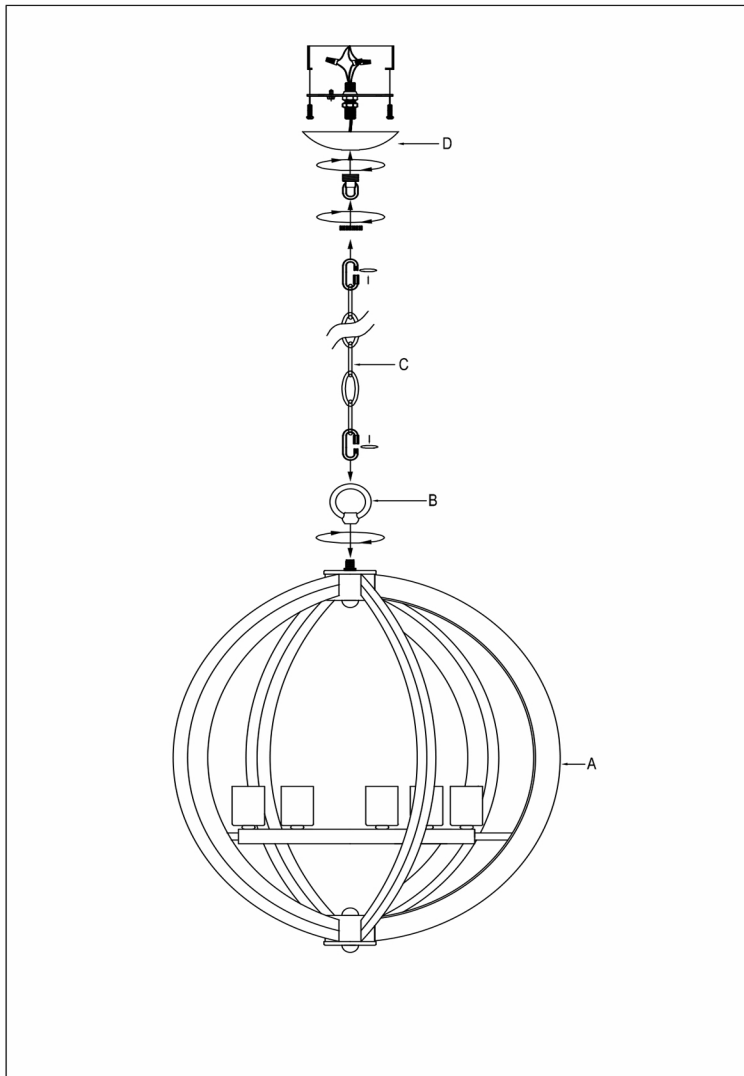


(D) Canopy

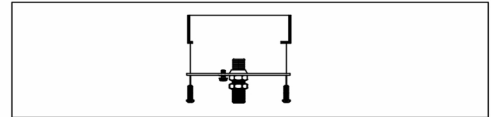


(E) Screw Ring

Locate all hardware & components before discarding packaging

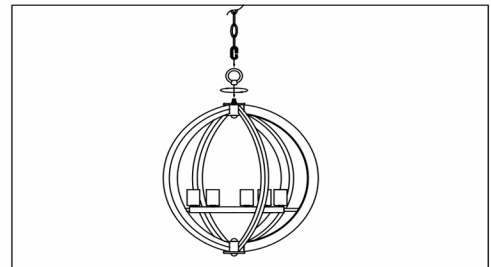


1.)



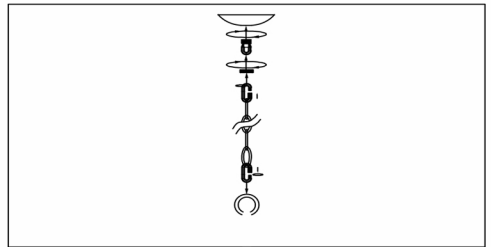
Step.1: Remove mounting bracket from fixture and install to electrical box.

2.)



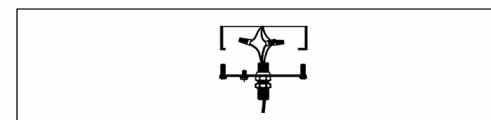
Step.2: Install top loop (A) to body (B) and attach appropriate amount of chain to loop to achieve desired mounting height. Thread wire through every 3rd loop of chain.

3.)



Step.3: Remove ring from top and slide down chain. Place canopy (D) onto chain (C) and let slide to top of fixture. Install nipple and cross bar into top of chain loop.

4.)



Step.4: Wire fixture to wires in outlet box. Copper/Green wire is for Ground. Pull canopy through screw ring (E) up chain to ceiling and tighten securely.

Cleaning & Care:

Clean with soft cloth and a mild detergent.
Do not use abrasive cleaner.