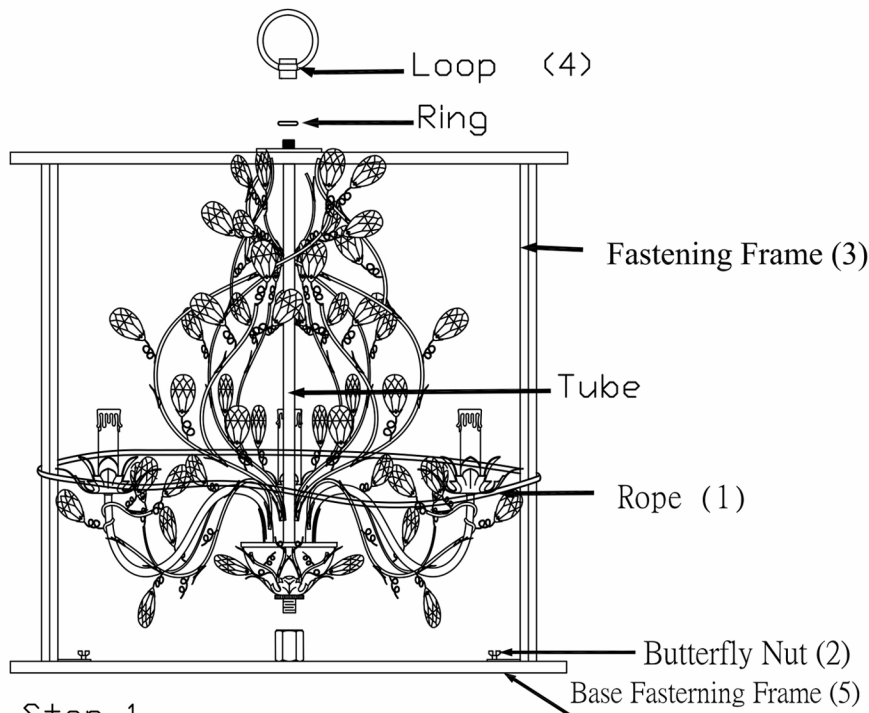


# STUDIO•M

SM26850

Please consult your electrician for hanging fixture and wiring.



## Step 1

Cut the rope (1) and remove them.

## Step 2

Unscrew the butterfly nuts (2).

## Step 3

Remove the fastening frame (3).

## Step 4

Put the ring in the tube, then screw in the loop (4) until it's tighten.

## Step 5

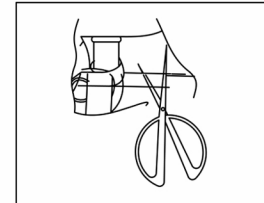
Lift the lamp and unscrew the base fastening frame (5) and remove it.

## Step 6

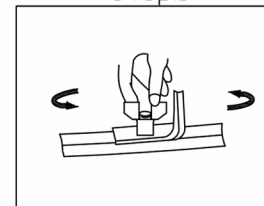
Screw the ball nut until it's fully tighten.

The lamp is now ready for installation.

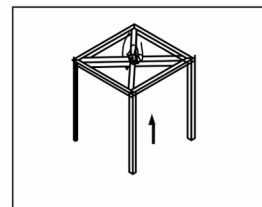
For installing the lamp please refer to the installation sheet for details.



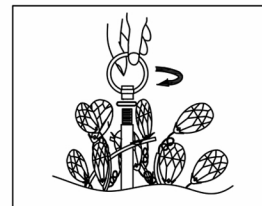
Step.1



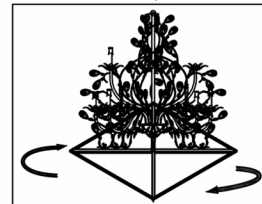
Step.2



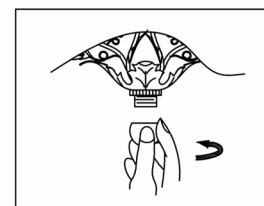
Step.3



Step.4



Step.5



Step.6