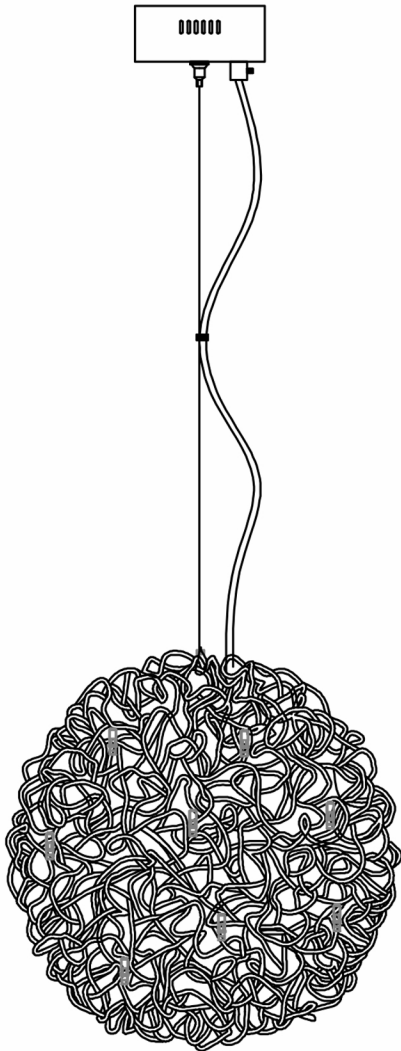


STUDIO•M

SM352576

Please consult your electrician for hanging fixture and wiring.



The fixture is list designed to dim with an Electronic Low Voltage dimmer. Dimming levels will vary by dimmer.

Below is a list of recommended dimmers:

Lutron DVELV-330P

Lutron MAELV-600M

Lutron SAELV-153P

Leviton IPL06-10Z

Leviton 6674-POW

Legrand Teu-Universal ADTP703T UW4

Due to inrush current, wattage should not exceed 150 Watts of product for a 600 Watt dimmer.

WARNING: Wires need to be connected to transformer found in canopy and should not be connected directly to power source or a short may occur

Bulbs (Included): 25*1.2W G4LED

IMPORTANT: Turn off the power at the main fuse or circuit breaker box before starting installation



(A)
Mounting Bracket

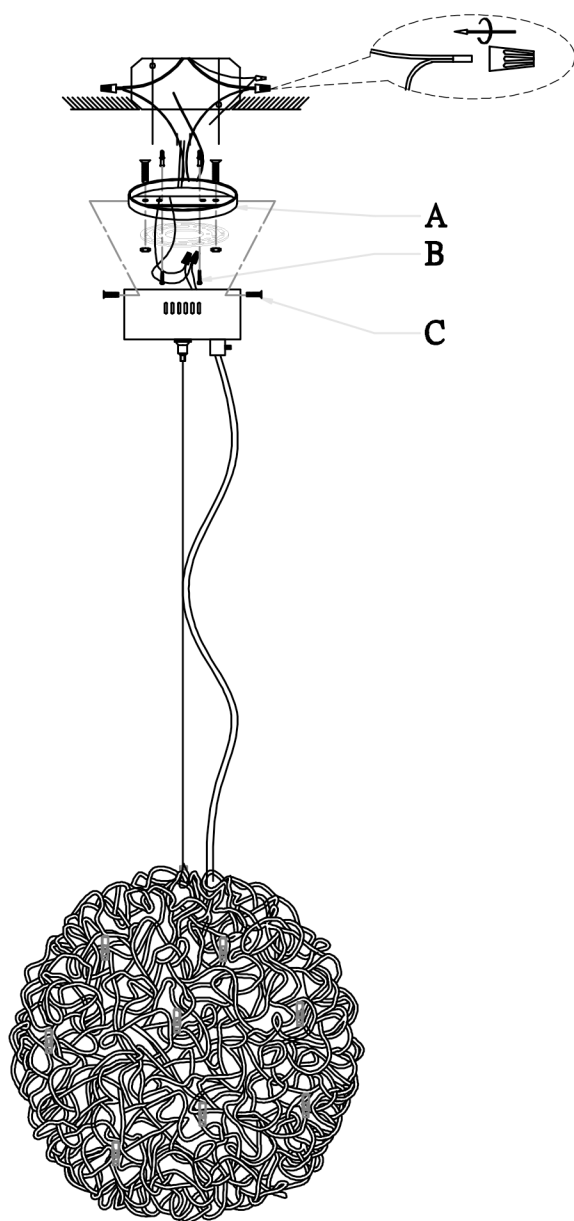


(B)
Anchor Bolts

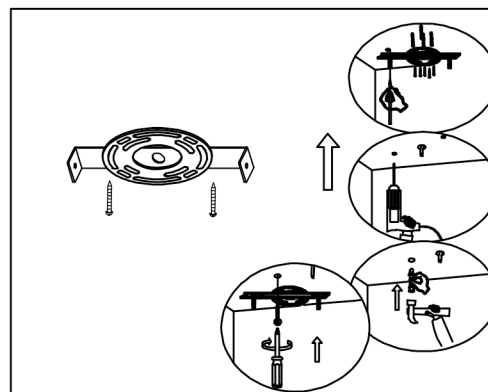


(C)
Screws

Locate all hardware & components before discarding packaging

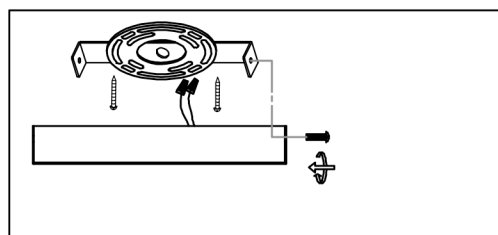


1.)



Step.1: Remove mounting bracket (A) and install to electrical box. Mark where anchors meet ceiling, remove mounting bracket from ceiling, and then drill holes using $\frac{3}{16}$ " drill bit where marked (B). Install mounting bracket and attach anchors to secure bracket at ends.

2.)



Step.2: Make wire connections. IF wires are adjusted, make sure to correctly re-wire to transformer found in canopy to mounting bracket using the screws on the side of the canopy to secure.

Cleaning & Care:

Clean with soft cloth and a mild detergent.
Do not use abrasive cleaner.