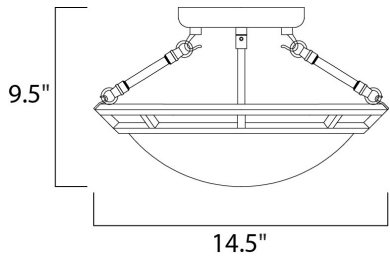




PRODUCT DESCRIPTION

Clean lines are simply stated in this collection. Offered in Marble glass with your choice of Bronze or Pewter finishes.



MEASUREMENTS

DIMENSION : 14.5" L x 14.5" W x 9.5" H
HANGING WEIGHT : 7.05 lb

LAMPING

INPUT VOLTAGE : 120V
BULB : 60W Incandescent E26 Medium , 180W Total
BULB INCLUDED : (Not Included)
DIMMABLE : Yes

FINISHES OPTION

- Bronze (BZ)
- Pewter (PE)

GLASS

Marble MR

MATERIAL

Steel

RATINGS

cULus
Dry Location



ADDITIONAL

OPERATING TEMPERATURE:
-20°C (-4°F), 40°C (104°F)

Always consult a qualified electrician before installing any lighting product.

STUDIO•M

Modifications or Customizations: Please email contract@studiomlighting.com
Sample Request: Please email order@studiomlighting.com with subject line
"Sample Order_ [Project Name] / [Specifier/Designer]"
All samples are subject to Studio M approval and must show proof of project and/or explanation.

Job Name:	Job Type:
Quantity:	Comments