

PRODUCT DESCRIPTION

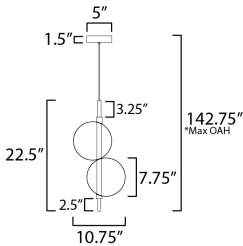
Drawing inspiration from her acclaimed "Dreamcloud" experiential design at Art Basel Miami, Nina Magon reinterprets her otherworldly installation for use in the home or hospitality project. The exaggerated curve, definitive of Magon's lighting design, suspends iridescent bubble-like glass forms that appear to float across channels of LED illumination. Available in Heritage Brass and Gunmetal finishes, this Dreamer pairs perfectly with coordinating finishes in the Nina Magon lighting collection.

MEASUREMENTS

DIMENSION : 10.75" L x 10.75" W x 22.5" H  
MAX OAH : 142.75" OAH  
CANOPY : 5" W x 1.5" H x 5" L  
HANGING WEIGHT : 3.74 lb

LAMPING

INPUT VOLTAGE : 120-277V  
LUMENS : 480 Rated (220 Del.)  
BULB : 6W LED PCB Integrated , 6W Total  
BULB INCLUDED : (Integrated)  
DIMMABLE : 0-10V  
CRI : 90 CRI  
COLOR\_TEMP : 3000K



\*max overall height

FINISHES OPTION

- Black Chrome (BC)
- Natural Aged Brass (NAB)

GLASS

Iridescent IR

MATERIAL

Steel, Aluminum, Acrylic, Glass

RATINGS

cETLus  
Location



ADDITIONAL

SLOPE:  
OPERATING TEMPERATURE:  
-20°C (-4°F), 40°C (104°F)

Always consult a qualified electrician before installing any lighting product.

STUDIO•M

Modifications or Customizations: Please email [contract@studiomlighting.com](mailto:contract@studiomlighting.com)  
Sample Request: Please email [order@studiomlighting.com](mailto:order@studiomlighting.com) with subject line  
"Sample Order\_ [Project Name] / [Specifier/Designer]"  
All samples are subject to Studio M approval and must show proof of project and/or explanation.

Job Name:	Job Type:
Quantity:	Comments