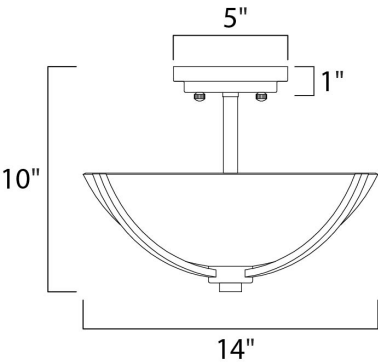




PRODUCT DESCRIPTION

A clean, contemporary design featuring rectangular tubing, finished in Polished Chrome, is enhanced by the tall scale, Satin White glass shades.



MEASUREMENTS

DIMENSION : 14" L x 14" W x 10" H
HANGING WEIGHT : 5.51 lb

LAMPING

INPUT VOLTAGE : 120V
BULB : 60W Incandescent E26 Medium , 180W Total
BULB INCLUDED : (Not Included)
DIMMABLE : Yes

FINISHES OPTION

 Polished Chrome (PC)

GLASS

Satin White SW

MATERIAL

Glass, Steel

RATINGS

cETLus
Dry Location



ADDITIONAL

OPERATING TEMPERATURE:
-20°C (-4°F), 40°C (104°F)

Always consult a qualified electrician before installing any lighting product.

STUDIO•M

Modifications or Customizations: Please email contract@studiomlighting.com
Sample Request: Please email order@studiomlighting.com with subject line
"Sample Order_ [Project Name] / [Specifier/Designer]"
All samples are subject to Studio M approval and must show proof of project and/or explanation.

Job Name:	Job Type:
Quantity:	Comments